



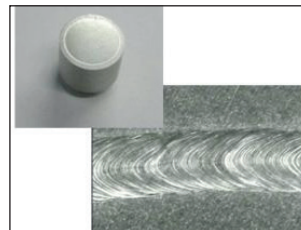
ML-6500C, ML-6700B, ML-6810B Fiber Laser Welder

The new 1 kW fiber laser welder ML-6810B from MIYACHI offers excellent beam quality and maximum power for new and precise welding applications like steel sheet and copper. ML-6810B meets the laser welding needs perfectly in the medical, automotive, battery and electronic industries.

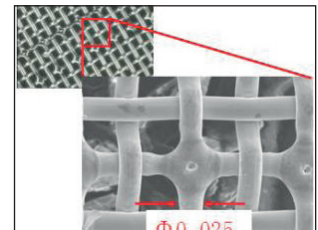
KEY FEATURES

- Small focus with longer focal lengths
- Higher efficiency than lamp pumped systems
- Plug and play systems
- Estimated diode life time > 100.000 hours
- Integrated internal chiller
- Integrated beam splitter (up to three outputs)
- Energy share or time share available for certain models upon request
- Outstanding beam parameter product
- CW / Pulse selectable
- Pulse: 1 to 5000 pps
- Fiber diameter: SI 0.05 – 1 mm
- Environment: 5 to 50° C with humidity 50 to 85%
- IP 54

TYPICAL APPLICATIONS



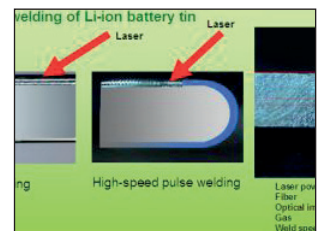
Fine cutting of metals



Brazing



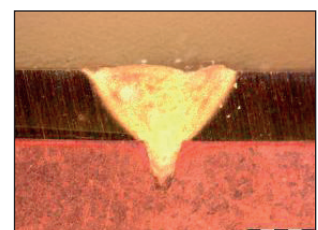
Plastic welding



Cladding



Bellows welding



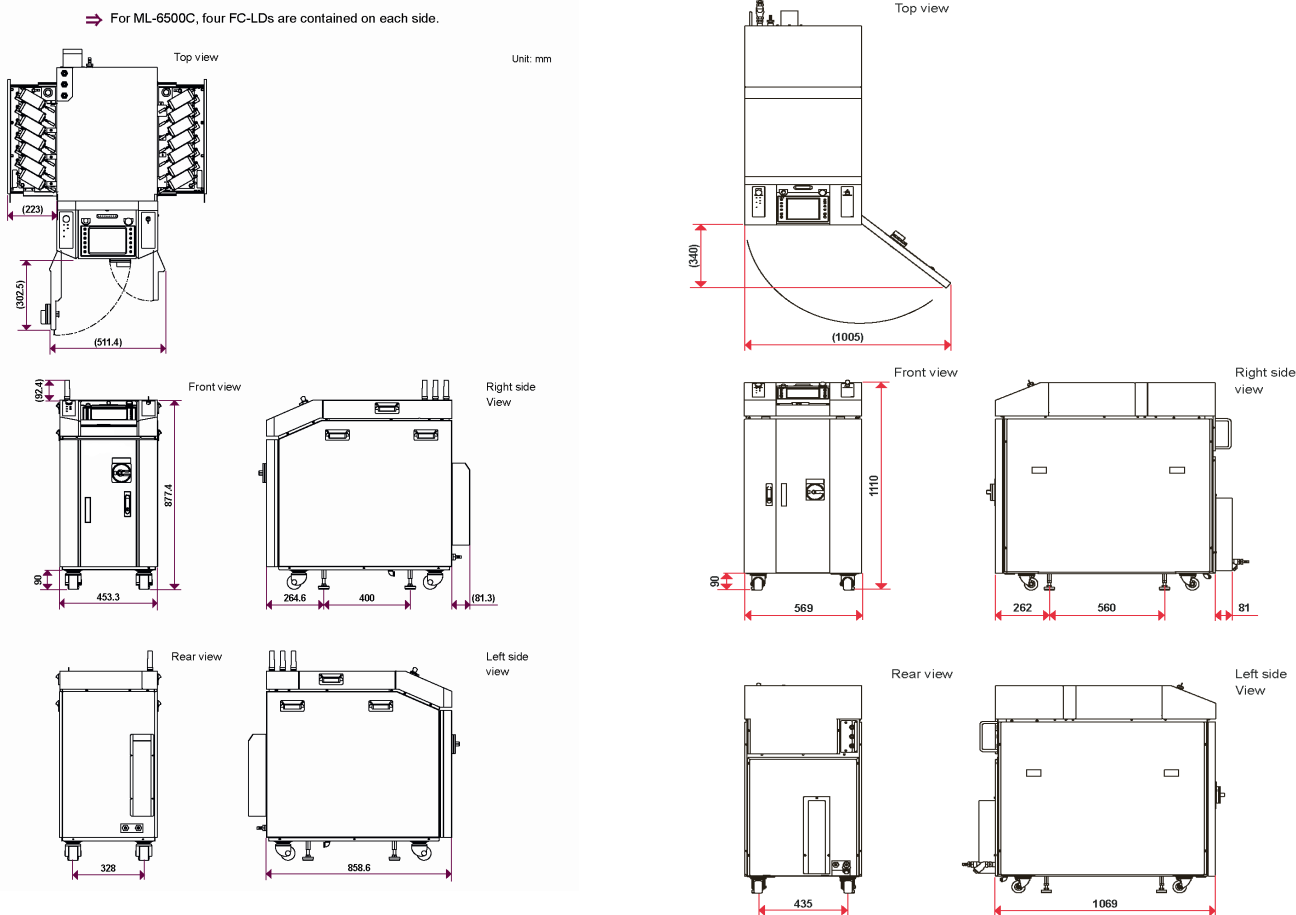
CuSn6



TECHNICAL SPECIFICATIONS

Model	ML-6500C	ML-6700B	ML-6810B
Max. rated output	300 W	500 W	1000 W or 1200 W
Power requirements	3-phase, 200 V to 400 V AC (+10% / -15%) , 50/60 Hz		
Breaker rated current	20A (380 V / 400 V)	30A (380 V / 400 V)	50A (380 V / 400 V)
Cooling	Water – Water		
Weight	240 kg	250 kg	280 kg
Safety class	Class 4 laser, pilot laser: Class 1		
Certification	CE compliant		

DRAWINGS



Lindberghstrasse 1 • DE-82178 Puchheim, Germany
 T: +49 (0) 89 83 94 030 • Fax : +49 (0) 89 839403 68
 info@amadamiyachi.eu • www.amadamiyachieurope.com
 ISO 9001 Certified Company



EUROPE
Amada Miyachi Europe BV
 Helmond, The Netherlands
 T: +31 (0) 492 542 225
 info@amadamiyachi.eu

Amada Miyachi Europe
 Saint Germain en Laye, France
 T: +33 (0) 139 046 430
 info@amadamiyachi.eu

Amada Miyachi Europe Kft.
 Budapest, Hungary
 T: +36 1 431 9927
 info@amadamiyachi.eu

Amada Miyachi Europe
 Torino, Italy
 T: +39 011 223 83 16
 info@amadamiyachi.eu

Amada Miyachi Europe
 Derby, United Kingdom
 T: +44 (0) 1332 361 238
 info@amadamiyachi.eu

Amada Miyachi Europe
 Prague-West, Czech Republic
 T: +420 251 512 157
 info@amadamiyachi.eu

AMERICAS
Amada Miyachi America Inc.
 Monrovia, CA, USA
 T: +1-626-303-5676
 info@amadamiyachi.com

Amada Miyachi do Brasil Ltda.
 Sao Paulo, Brasil
 T: +55-11-4193-1187
 antonio.ruiz@miyachi.com

ASIA
Amada Miyachi Co., Ltd.
 Noda, Japan
 T: +81-4-7125-6177
 sales@miyachi.com

Amada Miyachi Shanghai, Co., Ltd.
 Shanghai, China
 T: +86-21-6448-6000
 zqzhang@msc.miyachi.com

Amada Miyachi Korea Co., Ltd.
 Gyeonggi-do, Korea
 T: +82-31-8015-6810
 dykim@mkc.miyachi.com

Amada Miyachi Taiwan Co., Ltd.
 Taipei, Taiwan R.O.C.
 T: 886-2-2397-4778
 keigaku@miyachi.com

Amada Miyachi (Thailand) Co., Ltd.
 Samutprakarn, Thailand
 T: +66-2751-9337-8
 info@mtl.miyachi.com

Amada Miyachi Vietnam Co., Ltd.
 Ho Chi Minh City, Vietnam
 T: +84-8-3771-7972

Amada Miyachi India Pvt., Ltd.
 Bangalore, Karnataka
 info@miyachiindia.com

All data, images and text are subject to change at any time. Amada Miyachi Europe GmbH reserves the right to change, modify, delete and add technical specifications and product details at any time without prior notification. © 2015 Amada Miyachi Europe GmbH.

